

65.18144959 °N 151.2397899 TOP LEFT

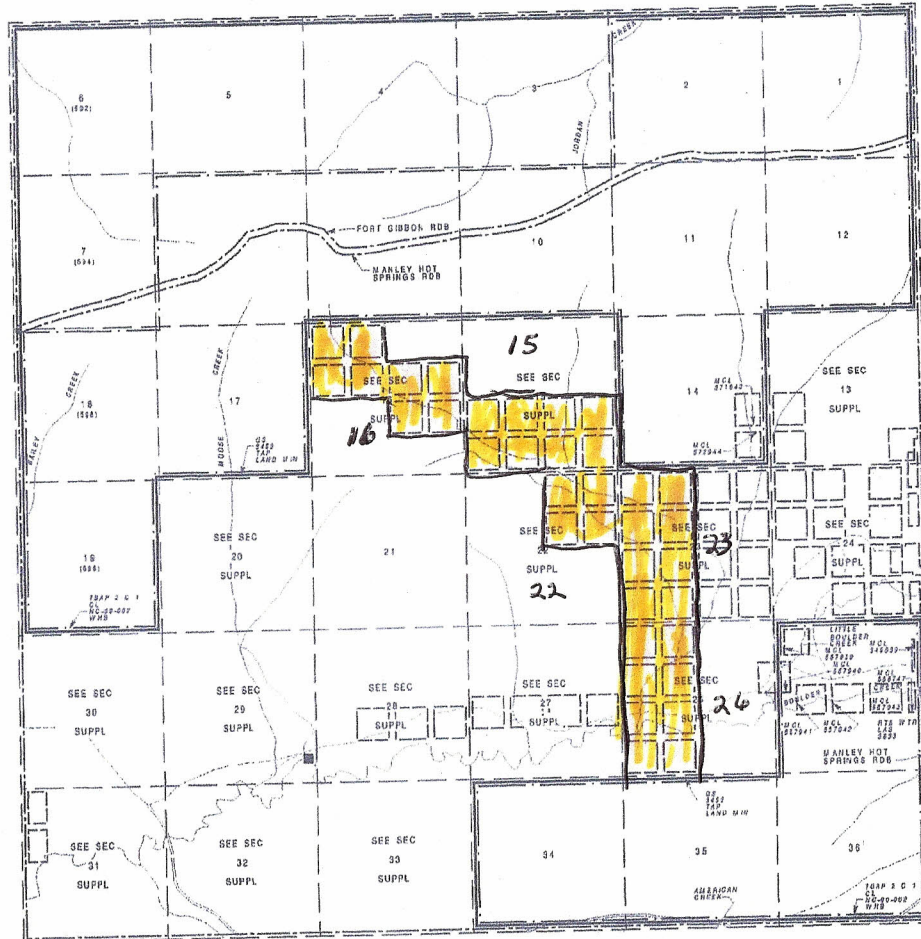
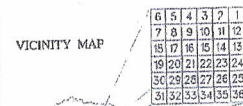
TOWNSHIP 4N RANGE 18W OF THE FAIRBANKS MERIDIAN, ALASKA

STATUS PLAT

LEGEND

- BASE INFORMATION**
- HYDROGRAPHY
 - SURVEY LINE
 - SURVEY LOT LINE
 - TOWNSHIP/SECTION GRID
 - 1/4 SECTION LINE
 - HIGHWAY
 - ROAD
 - TRAIL
 - RAILROAD
 - ELECTRICAL POWER LINE
 - TELEPHONE LINE
 - PIPELINE
 - AIRPORT/LANDING STRIP
 - HORIZONTAL CONTROL
 - CONTROL MONUMENT

- STATUS INFORMATION**
- TITLE
 - BOUNDARY
 - CLASSIFICATION
 - DISPOSAL
 - MUNICIPAL
 - RESTRICTION
 - FEDERAL ACTION
 - MENTAL HEALTH TRUST
 - LIMITS OF ACTION
 - NAVIGATIONAL AID
 - CABIN PERMIT
 - TRAPPING CABIN PERMIT
 - TRESPASS LOCATION
 - SURFACE WATER RIGHTS**
 - APPLICATION
 - PERMIT
 - CERTIFICATE
 - SUB-SURFACE WATER RIGHTS**
 - APPLICATION
 - PERMIT
 - CERTIFICATE
 - IN-STREAM FLOW RESERVATION**
 - APPLICATION
 - CERTIFICATE
 - DAM, WEIR, BARRIER**
 - APPLICATION
 - PERMIT
 - CERTIFICATE



THE STATE OWNS ALL LAND UNDER WATER THAT IS NAVIGABLE IN FACT, AND SUBJECT TO THE EBB AND FLOW OF THE TIDES, OR ARE RIPARIAN OR LITTORAL TO ISLANDS OWNED BY THE STATE.

BASED ON:

COORDINATES:
ALASKA STATE PLANE ZONE 4
SE CORNER OF TOWNSHIP:
X 330217.16
Y 402216.00
LAT 65 07 25.371 N
LONG 151 08 56.845 W

HYDROGRAPHY:
USGS TANGANA (A3) REVISED BY BLM FROM AERIAL HIGH ALTITUDE PHOTOGRAPHY 1978-1988

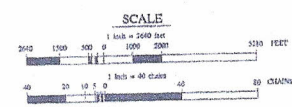
LAND USE:
BLM PROTECTION DIAGRAM P5-12, APPROVED 04/18/2000

OTHER ACTIONS AFFECTING USE OR DISPOSAL OF STATE LANDS:
SEE L&AS CORRELATE OR ORIGINAL SOURCE DOCUMENTS FOR ADDITIONAL INFORMATION:

SUBJECT TO TANGANA BASIN AREA PLAN
CL 82-100-000 WHICH DOES NOT CLARIFY ANY PRIVATE, BOROUGH OR FEDERAL LANDS
OR ANY TENTATIVE APPLICATIONAL EXCLUDING MINING CLAIMS
P-04819 THROUGH P-05230 AND P-01937 THROUGH P-01974
WHICH APPEAR TO FALL WITHIN SECTIONS 13,22,23,24 AND 28-31

ADL 572901-572908
572909-572916
572937-572940
572950-572957
572962-572969

GRAPHIC ILLUSTRATION ONLY.
SOURCE DOCUMENTS REMAIN THE OFFICIAL RECORD.
CONSULT LAND ADMINISTRATION SYSTEM (LAS)
CONSULET FOR ADDITIONAL INFORMATION



ATTENTION STATUS PLAT USERS: ON THIS PLAT, ALL STATUS LINES CLOSE FOR ACTIONS THAT EXTEND INTO ADJACENT TOWNSHIPS. THIS INCLUDES STATUS LINES SUCH AS DISPOSAL, MUNICIPAL, TITLE CLASSIFICATION, ETC. PLEASE REFER TO ADJACENT TOWNSHIPS OR LAS TO DETERMINE IF ACTIONS EXTEND BEYOND THE BOUNDARIES SHOWN ON THIS PLAT. REGENERATE TITLE CLASSIFICATION, AND RESTRICTION LINES ALWAYS CLOSE ON ALL PLATS.

A PRODUCT OF THE
STATE OF ALASKA
DEPARTMENT OF NATURAL RESOURCES
LAND RECORDS INFORMATION SECTION

SP
TWP 4N
RNG 18W
FM

PLAT CURRENT TO 07/01/2000, REFER TO THE ONR STATUS PLAT TRACKING SYSTEM (SPATRAS) FOR OTHER PENDING ACTIONS ON THIS TOWNSHIP/PLAT

CHECKED BY: TERI MCCOY

abc hydro